



NANOLOGICA

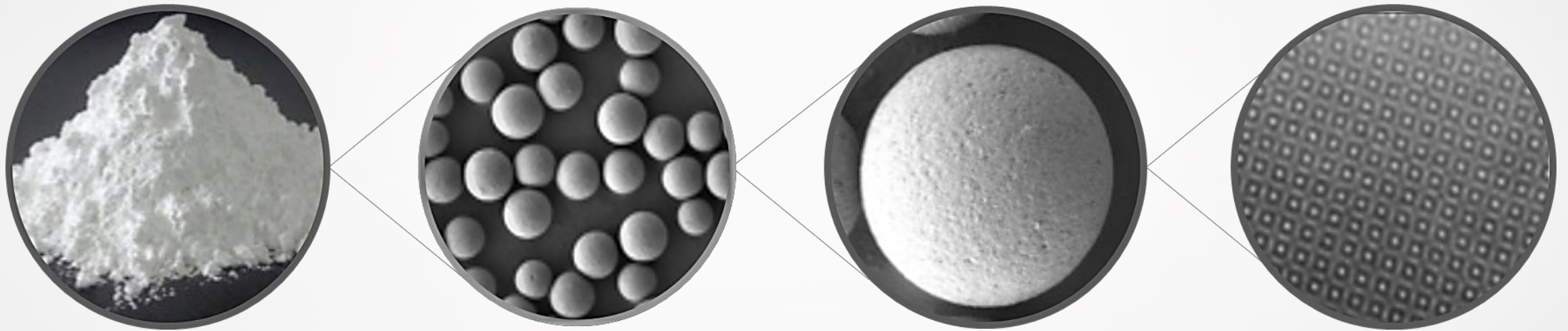
BETTER AND CHEAPER MEDICINE
TO A LARGER NUMBER OF PATIENTS



MISSION

We strive to make diabetes and obesity medicines available to more patients by providing products that can lower manufacturing costs of these drugs.

OUR TECHNOLOGY



Nanologica produces best in class amorphous silica.

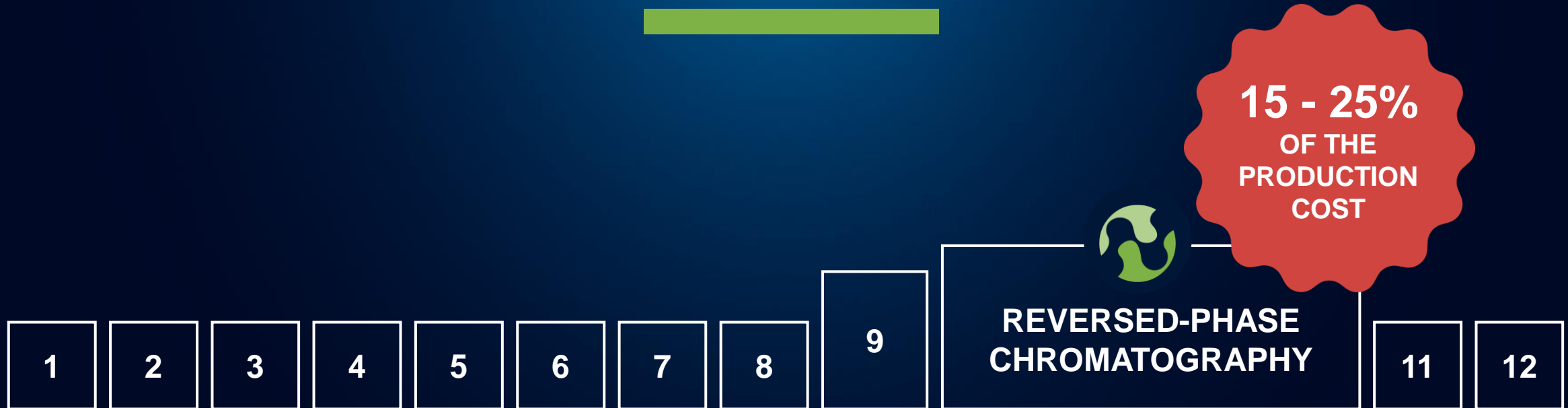
We are world-leading in controlling properties of silica particles which enables us to create high-quality products for preparative chromatography, a purification technique used in drug manufacturing.

NLAB SAGA® - SILICA FOR PREPARATIVE CHROMATOGRAPHY

NLAB Saga® is used in the final purification step of e.g. insulin and GLP-1 analogues to achieve approved purity

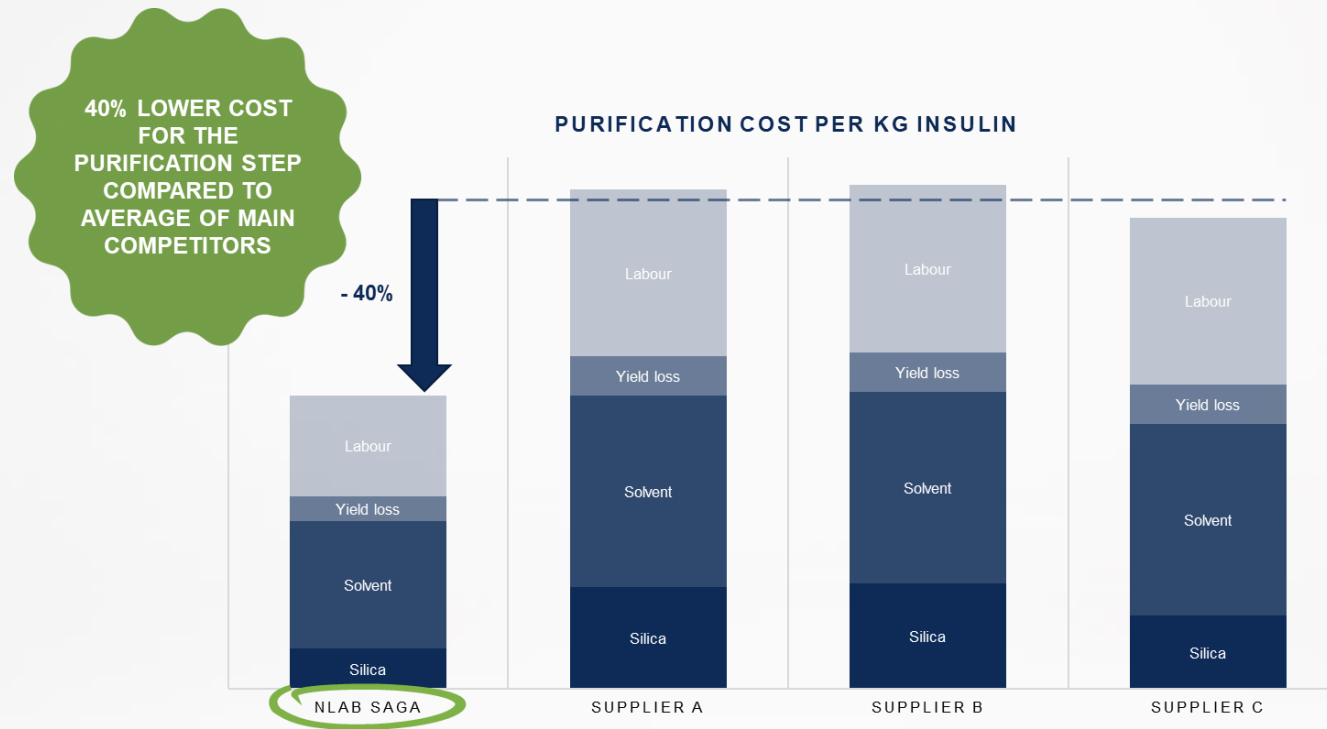


OVERVIEW OF RECOMBINANT HUMAN INSULIN MANUFACTURING





Nanologica offers cost-reducing solution to the phase in insulin purification
that accounts for 15–25% of the production cost

PRODUCT SUPERIORITY GENERATES MAJOR SAVINGS



By increased efficiency and excellent durability, NLAB Saga® can significantly reduce the costs for drug manufacturers.

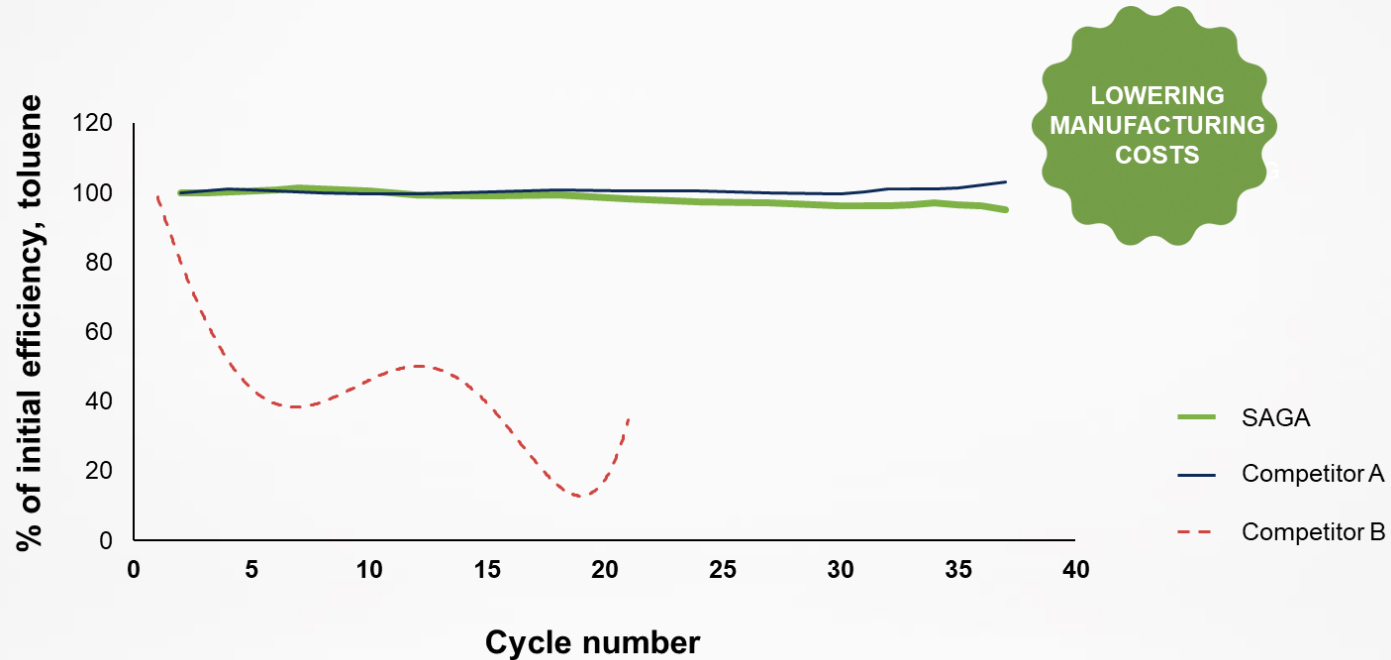
EXCELLENT PERFORMANCE COMPARED TO COMPETITORS

	 NANOLOGICA	COMPETITOR A	COMPETITOR B	COMPETITOR C
Phase	NLAB® C8	C8	C8	C8
USP method purity (%)	99.50%	97.08%	98.56%	98.82%
		Do not reach purity threshold of 99.2%		

Nanologica's NLAB Saga® reaches the purity threshold in fewer purification cycles compared to competitors, leading to cost-savings for the drug manufacturer.

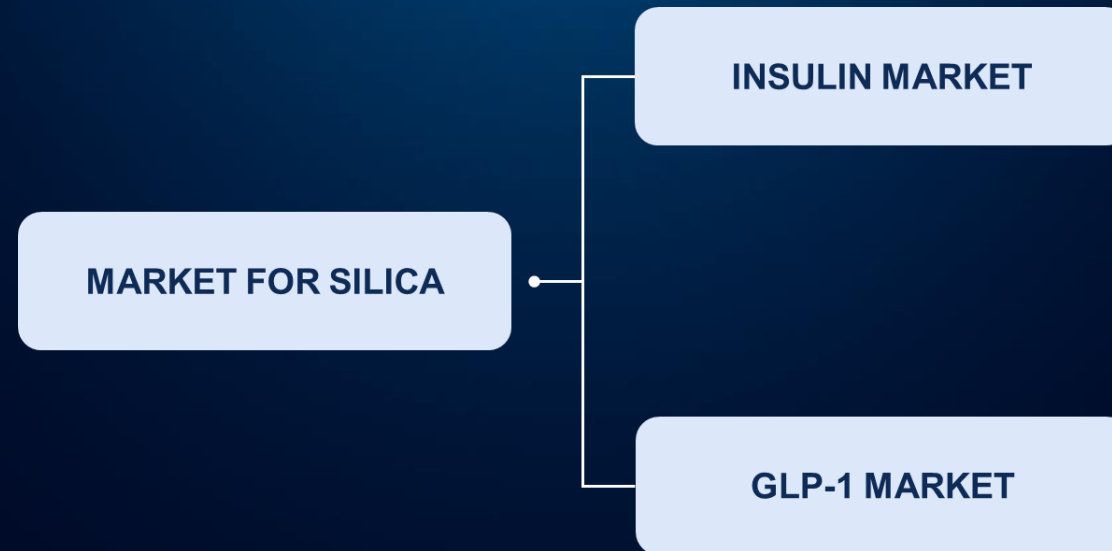
Source: Company information. Test performed for customer.

NLAB SAGA® – BEST IN CLASS REGARDING DURABILITY

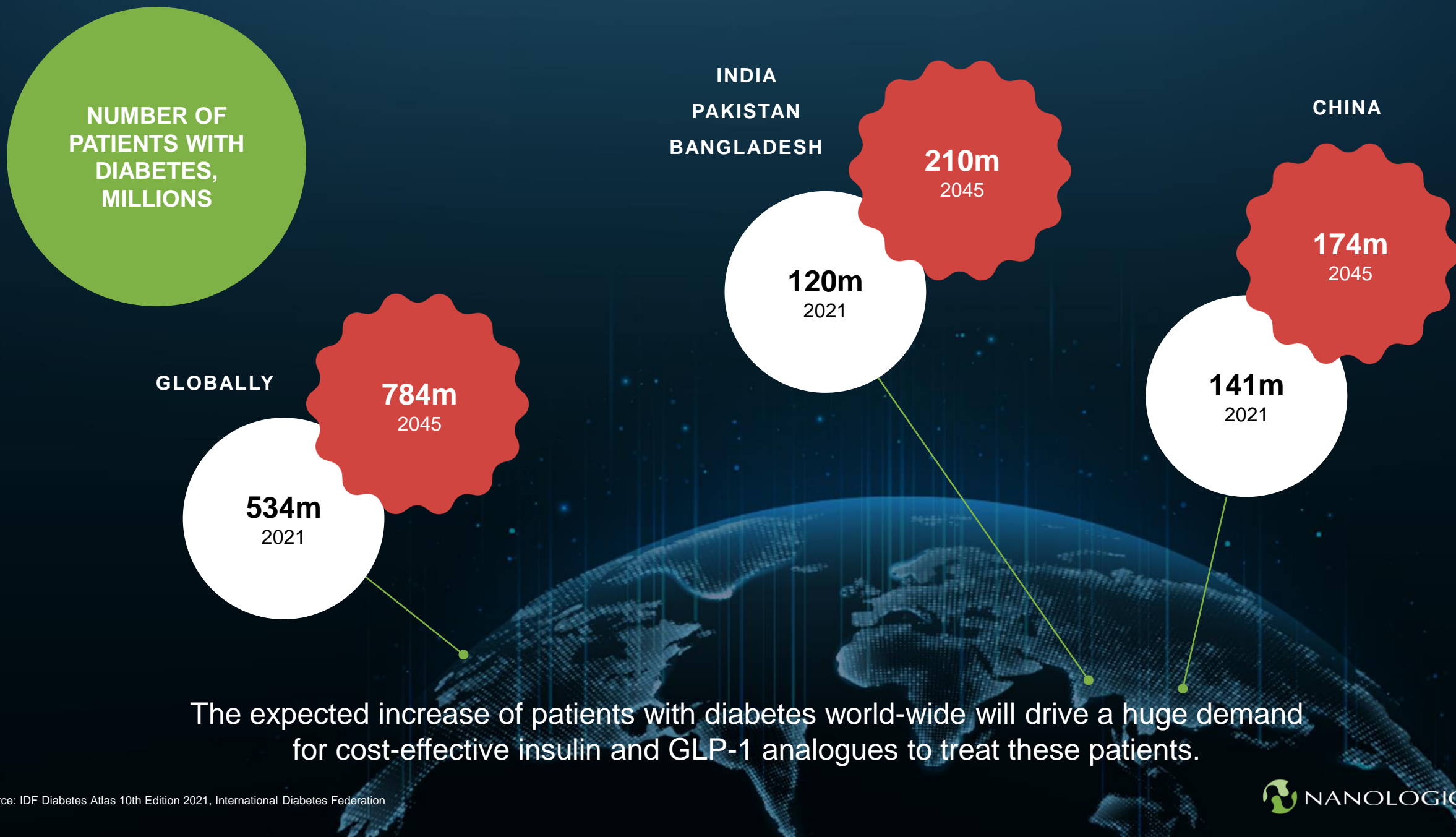


Nanologica's NLAB Saga® is chemically and mechanically stable with a durability in line with the market leader, leading to cost-savings for the drug manufacturer.

MARKET FOR SILICA FOR PREPARATIVE CHROMATOGRAPHY



The market for silica for preparative chromatography is mainly driven by the insulin market and the GLP-1 analogue market. It is the number of doses of drugs that drive the silica market.



The expected increase of patients with diabetes world-wide will drive a huge demand for cost-effective insulin and GLP-1 analogues to treat these patients.

NUMBER OF
PATIENTS WITH
OBESITY,
MILLIONS

GLOBALLY

650m
2021

1,000m
2031

The expected increase of patients with obesity world-wide will further drive the demand for drugs such as GLP-1 analogues to treat these patients.

OLIGOPOLY MARKET



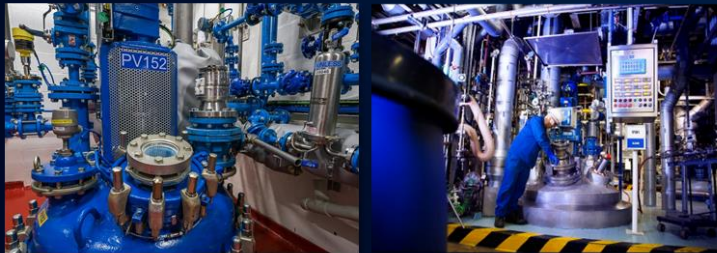
Kromasil®

OSAKA SODA

YMC

The market for silica for preparative chromatography is an oligopoly market with a current lack of capacity which is expected to increase.

PRODUCTION



The production of silica has been scaled up at a CMO. The first products from large-scale production have been delivered to customers. Production will incrementally increase to meet customer orders and will be optimized to shorten lead times.

RECENT AND ANTICIPATED MILESTONES

2022

- Launch of NLAB Saga® for preparative chromatography
- Nanologica AB listed on Nasdaq Main Market

2023

- Approved product from large-scale production
- First deliveries to customers – NLAB Saga® used in production of insulin at customer
- Company focuses operations solely on Chromatography

2024

- Sales
- *Optimization of production (lead times, capacity and production economy)*

MANAGEMENT TEAM



ANDREAS BHAGWANI

CEO (2011)

Co-founder and board member of several companies in the treatment of diabetes and obesity, and gender equality. MBA from Stockholm School of Economics.



ANNA-KARIN RENSTRÖM

Director Operations and Strategies (2019)

Former CEO of Telge Inköp. Various positions within purchasing and finance at AstraZeneca.



EVA OSTERMAN

CFO (2017)

Extensive experience from major international firms such as AstraZeneca, Lantmännen and PwC, working with business control, financial control, reporting and internal audit.



KATARINA ALENÄS

SVP Chromatography (2022)

Extensive experience from the life science industry and chromatography, with senior positions at Agilent Technologies and Shimadzu HPLC/LCMS, product and method developer for Kromasil silica-based packaging media for preparative chromatography.

BOARD OF DIRECTORS



GISELA SITBON

Chairperson (BoD 2012, Chairperson 2014)
Business coach in the life science sector. Board member of several life science companies.



THOMAS ELDERER

Board Member (2021)
Co-founder and former CEO of Recipharm. Operative chairman of Flerie Invest AB. Chairman of several life sciences companies.



MATTIAS BENGTSSON

Board Member (2019)
Business Unit Manager BioMedical & Research, AddLife AB. Former General Manager of Kromasil. Several board assignments.



ANDERS RABBE

Board Member (2020)
CEO of Mindforce Game Lab AB. Former CEO of Isofol Medical, Wntresearch and several companies within biotech and finance.



LENA TORLEGÅRD

Board Member (2014)
Communications specialist in financial and corporate communications. Chairman of the board of CoDesignSweden AB.

OVERVIEW OF SHAREHOLDERS

47.4%
OWNED BY BOARD,
MANAGEMENT AND
EMPLOYEES

SHAREHOLDER	NO. OF SHARES	%-OWNERSHIP
Flerie Invest AB (Thomas Eldered)	14,901,635	41.2%
Swedbank Robur Microcap	2,353,006	6.5%
Andreas Bhagwani via Vega Bianca AB	2,017,264	5.6%
Konstakademien	1, 732,000	4.8%
Avanza Pension	1,512,124	4.2%
Fredrik Palmstierna	588,061	1.6%
Niklas Sjöblom	576,416	1.6%
SEB Life International Assurance	529,446	1.5%
Kronprinsessan Lovisas fören för barnsjukvård	518,974	1.4%
Andre Oscar o Anna Wallenbergs stiftelse	512,000	1.4%
<i>Other</i>	10,905,216	30.2%
Total	36,146,142	100,0%



IR@NANOLOGICA.COM