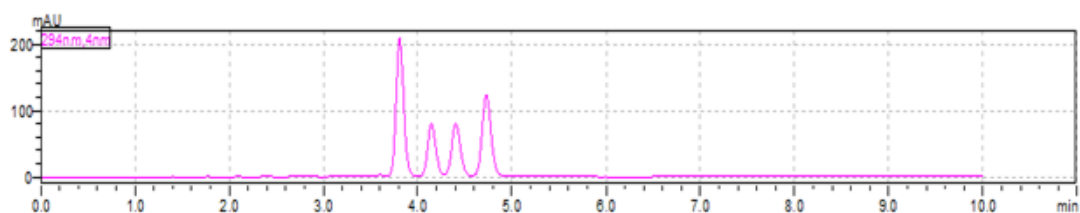


Separation of four different tocopherols in vitamin E

Experimental

Column: SVEA PFP 3.5 μ m 110 Å 2.1 x 150 mm
Mobile phase: 95% methanol + 5% water
Flow rate: 0.25 ml/min
Temperature: 30 °C
Detector: SPD-M30A UV 294 nm
Sample: Vitamin E



Peaks	Retention time	Resolution (USP)	Tailing	Tailing (10%)
1	3.809	--	1.134	1.118
2	4.147	2.143	1.142	1.107
3	4.406	1.535	1.055	1.079
4	4.729	1.832	1.092	1.082

Peak order: 1 Delta tocopherol, 2 Beta tocopherol, 3 Gamma tocopherol, 4 Alfa tocopherol

The SVEA PFP 3.5 μ m 2.1x150 mm column managed to perform the difficult separation of alfa, beta, gamma and delta components of vitamin E.

