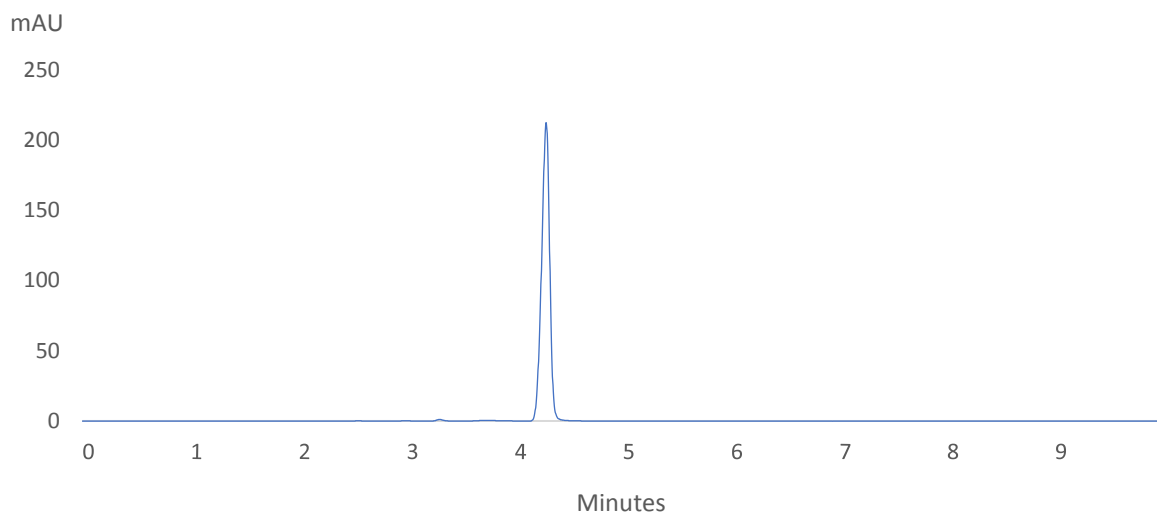


Lactic acid

Experimental

Column:	SVEA C8, 5 μ m 110 Å 4.6 x 250 mm
Instrument:	HPLC
Mobile phase:	0.1% phosphoric acid (pH 2.1): acetonitrile (98:2)
Flow rate:	1.0 ml/min
Injection volume:	10 μ l
Column temperature:	25°C
Detector:	UV 220 nm
Sample:	0.5 ml lactic acid diluted up to 100 ml in water
Run time:	10 min



	Lactic acid
Retention Time	4.3
USP Tailing	0.91
Theoretical plates	63032
Area Under Curve	1107.31