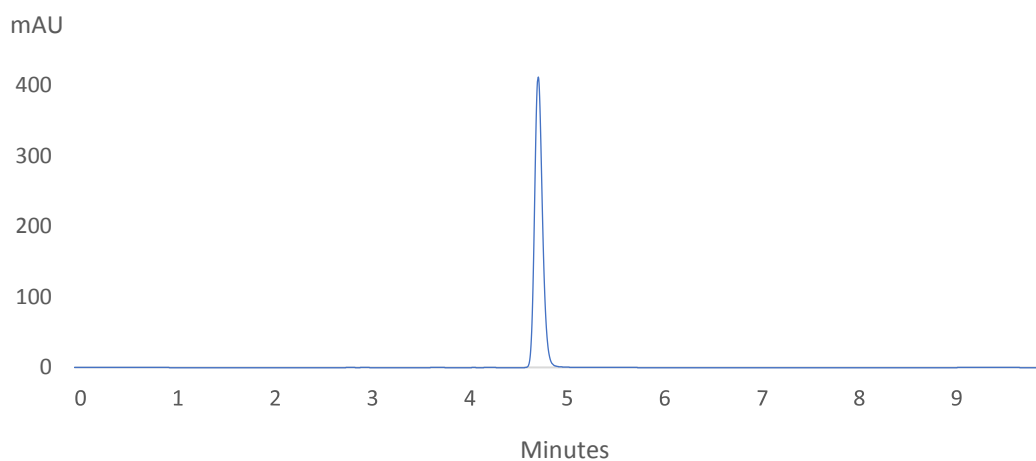


Acetic acid

Experimental

Column:	SVEA C8, 5 μm 110 \AA 4.6 x 250 mm
Instrument:	HPLC
Mobile phase:	0.1% phosphoric acid (pH 2.1): acetonitrile (98:2)
Flow rate:	1.0 ml/min
Injection volume:	10 μl
Column temperature:	25°C
Detector:	UV 220 nm
Sample:	10 μl acetic acid in 990 μl water
Run time:	10 min



	Acetic acid
Retention Time	4.8
USP Tailing	1.19
Theoretical plates	71476
Area Under Curve	2285.69