

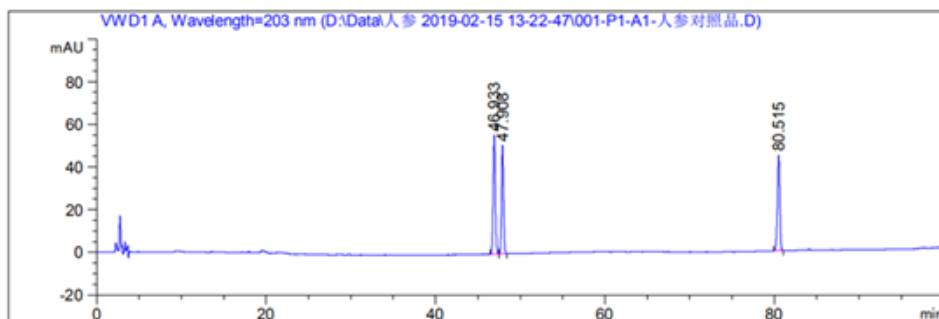
# Ginsenoside

## Experimental

**Column:** SVEA C18 Opal 5 µm 110 Å 4,6 x2 50 mm  
**Instrument:** Agilent 1260  
**Mobile phase:** Gradient in table. A = Acetonitrile, B = Water  
**Flow rate:** 1.0 ml/min  
**Injection volume:** 10 µl  
**Sample concentration:** 2 mg/ml  
**Column temperature:** 30 °C  
**Detector:** DAD 203 nm  
**Sample:** Ginsenoside

Gradient of mobile phase

Time (mins)	A,%	B,%
0-35	19	81
35-55	19-29	81-71
55-70	29	71
70-100	29-40	71-60



peak	analytes	Peak area	Resolution	Selectivity
1	Rg1	1024	-	
2	Re	840	2.16	1.02
3	Rb1	886	68.35	1.68