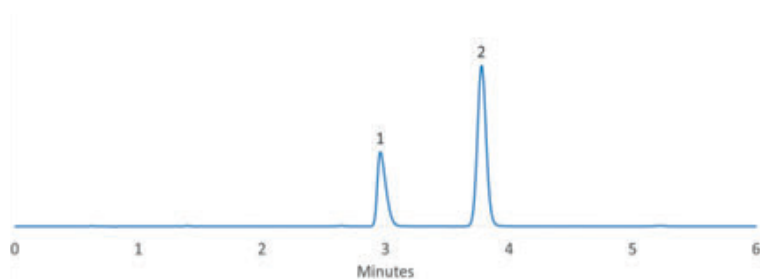


# Ibuprofen

## Separation of ibuprofen and valerophenone

### Experimental

**Column:** SVEA C18 Gold, 5 µm 110 Å 4.6 x 150 mm  
**Instrument:** HPLC  
**Mobile phase:** Acetonitrile/25mM chloroacetic acid pH 3.0 (60/40; v/v)  
**Flow rate:** 2.0 mL/min  
**Column temperature:** 30°C  
**Detector:** UV 254 nm  
**Sample:**  
1. Valerophenone  
2. Ibuprofen



Performance	Pharmacopoeia
$R_s 2,1 = 6.20$	$R_s 2,1 = \text{NLT } 2.5$
Tailing = 1.08	Tailing = NMT 2.5