

# Endocrine disruptors

## Experimental

**Column:** SVEA Core C18, 2.6  $\mu\text{m}$ , 4.6 x 100 mm

**Instrument:** HPLC

**Flow rate:** 1.0 mL/min

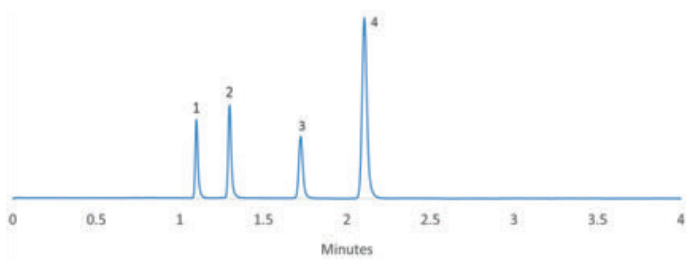
**Column temperature:** 40 °C

**Detector:** UV 280 nm

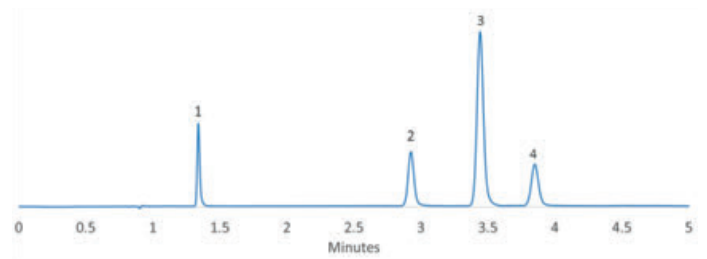
**Sample:**

1. Phenol
2. Bisphenol-A
3. 2,4-Dichlorophenol
4. Diethylphthalate

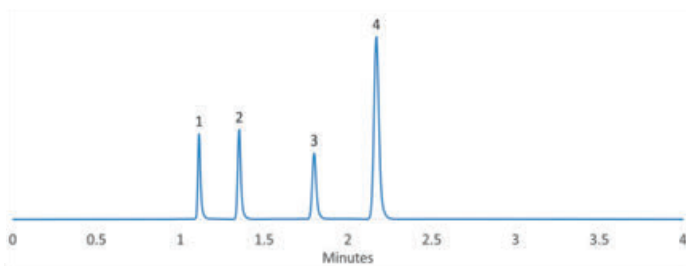
**Mobile phase:** Acetonitrile/20mM Potassium phosphate buffer pH 3.0 (60/40)



**Mobile phase:** Methanol/20mM Potassium phosphate buffer pH 3.0 (60/40)



**Mobile phase:** Acetonitrile/water/formic acid (60/40/0.04)



**Mobile phase:** Methanol/water/formic acid (60/40/0.04)

