

Determination of Catechins, Caffeine and Gallates in Oolong Tea

Experimental

Column: SVEA Core C18 2.6µm, 4.6*75mm

Instrument: HPLC

Mobile phase: A) 0.1% Phosphoric acid B) CH₃CN

Time	0 min	7.5 min	10 min
%B	2%	25%	25%

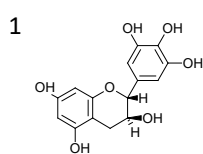
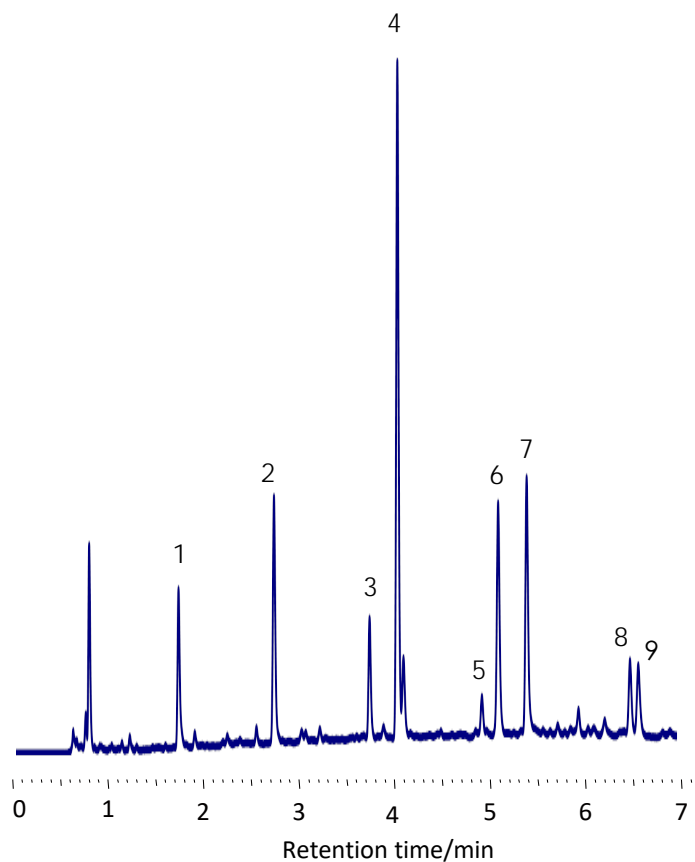
Flow rate: 1.0 mL/min

Column

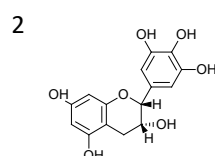
temperature: 25 °C

Detector: UV 250 nm

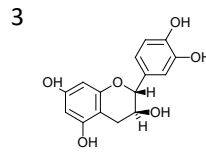
Sample: Oolong Tea



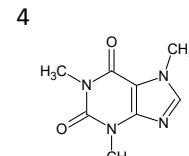
Gallocatechin



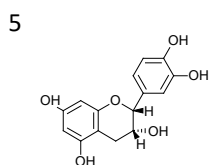
Epigallocatechin



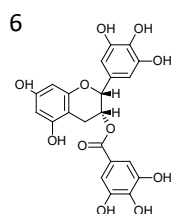
Catechin



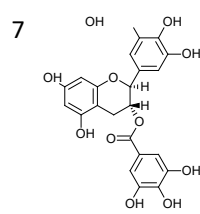
Caffeine



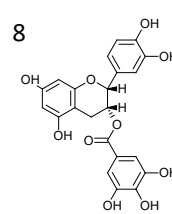
Epicatechin



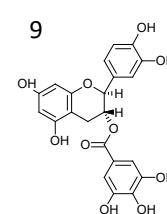
Epigallocatechin gallate I



Gallocatechin gallate



Epicatechin gallate



Catechin gallate