

Components of explosive

Experimental

Instrument: HPLC

Flow rate: 1.0 mL/min

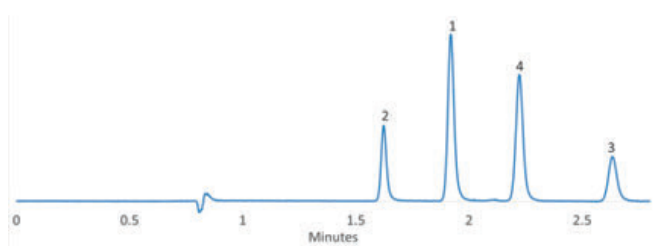
Column temperature: 40 °C

Detector: UV 250 nm

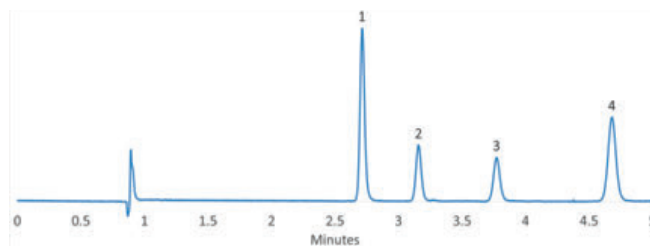
Sample:

1. 3-Dinitrobenzene
2. 1,3,5-Trinitrobenzene
3. 2,4-Dinitrotoluene
4. 2,4,6-Trinitrotoluene

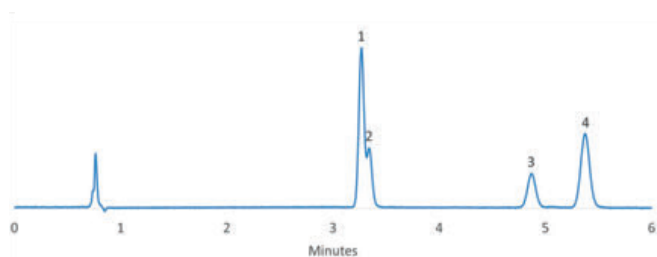
Column: SVEA Core C18, 2.6 μm , 4.6 x 100 mm
Mobile phase: Methanol/water (60/40)



Column: SVEA Core PhHex, 2.6 μm , 4.6 x 100
Mobile phase: Methanol/water (60/40)



Column: SVEA Core C18, 2.6 μm , 4.6 x 100 mm
Mobile phase: Acetonitrile/water (40/60)



Column: SVEA Core PhHex, 2.6 μm , 4.6 x 100 mm
Mobile phase: Acetonitrile/water (40/60)

