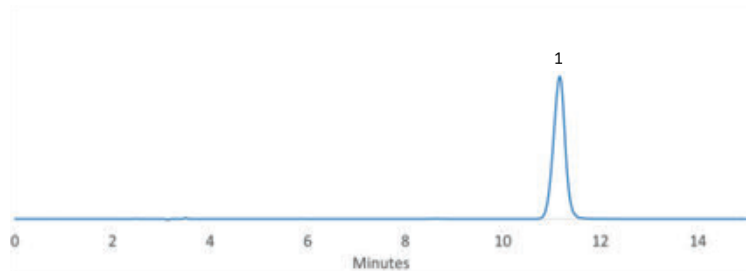


Amoxicillin

Experimental

Column: SVEA C18 Gold, 5 μm 110 \AA 4.6 x 250 mm
Instrument: HPLC
Mobile phase: 50mM K-phosphate buffer pH 5.0/acetonitrile (96/04)
Flow rate: 1.5 mL/min
Column temperature: 30 °C
Detector: UV 237 nm
Sample: 1. Amoxicillin



Performance	Pharmacopoeia
$k' = 2.5$	$k' = 1.1-2.8$
Efficiency (N) = 10505	Efficiency (N) = NLT 1700
Tailing = 0.96	Tailing = NMT 2.5